

Java Midlet Installer (JMI)

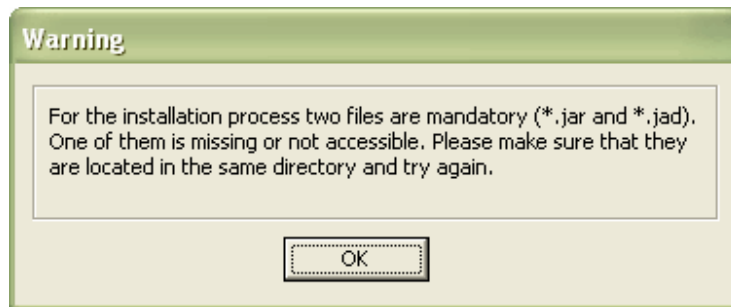
User Guide

1. Java Midlet Installer is an application, which enables user to install Java Midlets on the mobile. JMI gives possibility to install midlet as an application or a game. JMI works under Windows OS control.
2. JMI consists of one main window which enables to select midlet on local PC and install it on mobile. GUI provides information about status of phone connection.

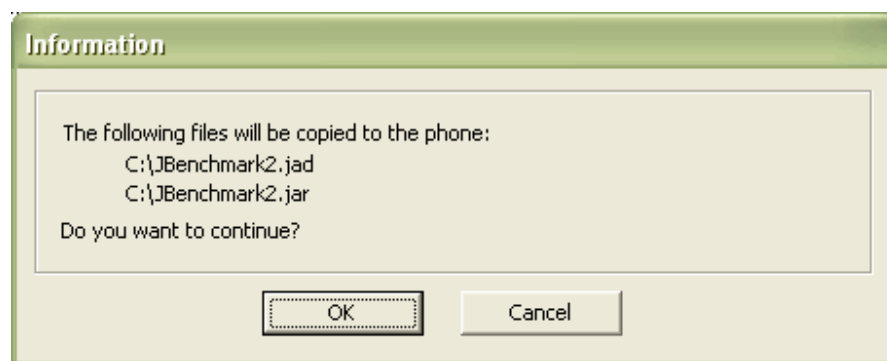


1. Area to select midlets on local PC
2. Phone connection status icon
3. Switch to select where midlet will be installed
4. Button to start installation process.

3. Installation process.
After start, JMI will find phone attached via USB cable to PC and will established connection between them. User can monitor status of the connection using connection status icon.
To install java midlet on a mobile two files are mandatory (*.jar, *.jad). Those two files must be placed in one directory. To select needed midlet user has to select only one of them, second one will be found automatically (if exists). If one of those files is not accessible, user will be informed.



If both of these files are accessible user will be asked to confirm installation.



After confirmation files will be copied into phone.

To finish installation process phone has to be reset. User can do it immediately or later.

